

INSTALLING ARCGIS 10 FOR WINDOWS

1.0 Install Virtual Private Network (VPN)

You will be able to use VPN to connect to the Dalhousie Campus Network from any Internet Service Provider. Once connected your machine will operate with a Dalhousie IP address through an encrypted tunnel and will have access to any network services that would normally be limited to the campus.

***note:** Using ArcGIS 10 requires a connection to the Dalhousie Network for those off campus this requires VPN.

VPN is available through the Dalhousie Information Technology Service's download page:
http://its.dal.ca/services/computer_services/downloads/

Instructions for downloading, and installing VPN are available through the Dalhousie Information Technology Service: <https://wireless.dal.ca/vpn/vpnsoftware/index.html>

2.0 Installing ArcGIS 10 and Service Pack

2.1 Download both ArcMap 10 and Service Pack to your desktop:

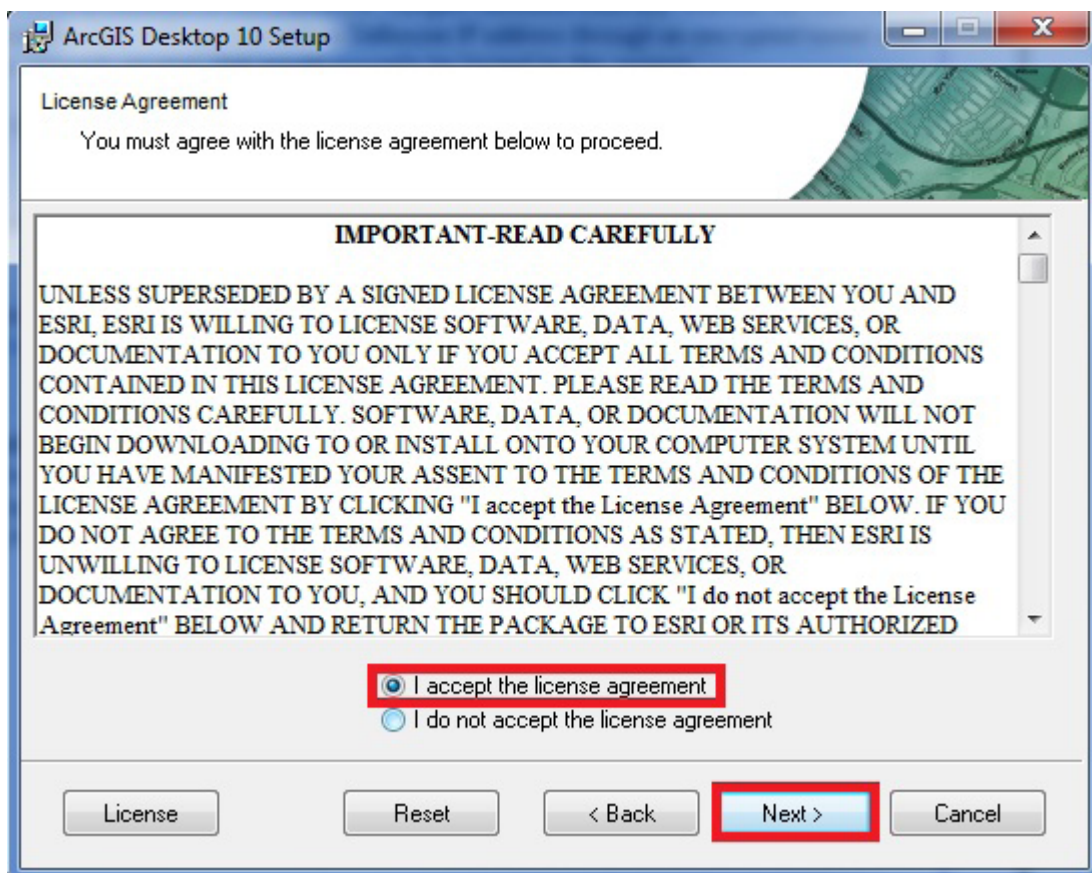
http://its.dal.ca/services/computer_services/downloads/arcgistest.html

2.2 Connect to the Dalhousie Network using VPN

2.3 Double Click the "ArcGIS10_Desktop.exe"

2.4 Click Next

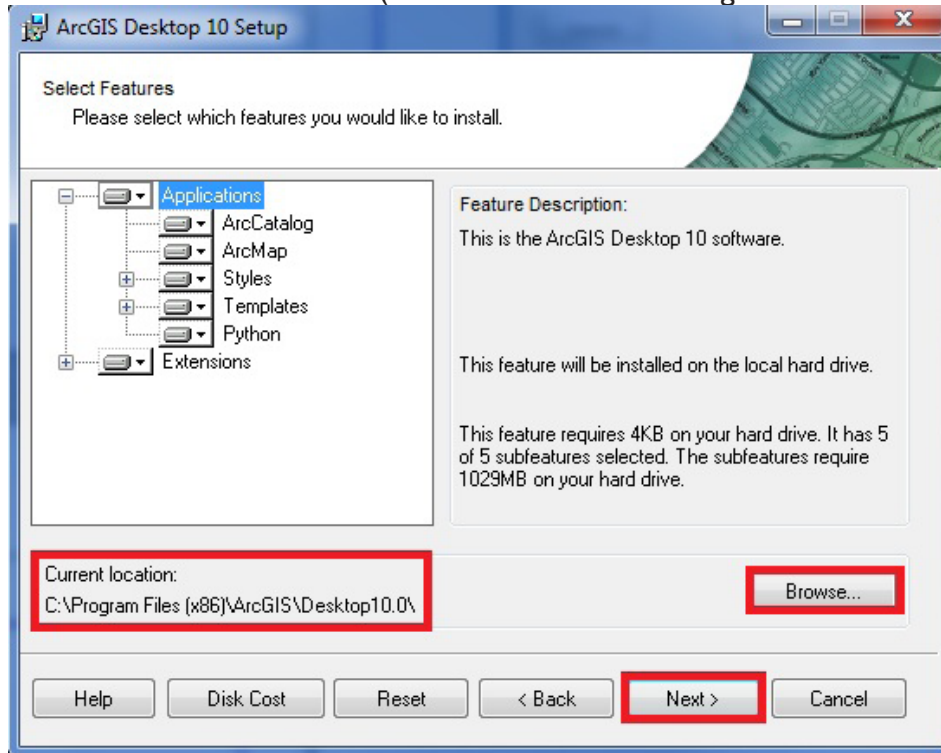
2.5 Choose "I accept the license agreement" and click Next



INSTALLING ARCGIS 10 FOR WINDOWS

2.6 Select “Custom” and click Next (This allows you to install ArcGIS to a custom location on your computer)

2.7 Click “Browse” to select an install location (ArcGIS defaults to C:\ProgramFiles\ArcGIS) and click Next

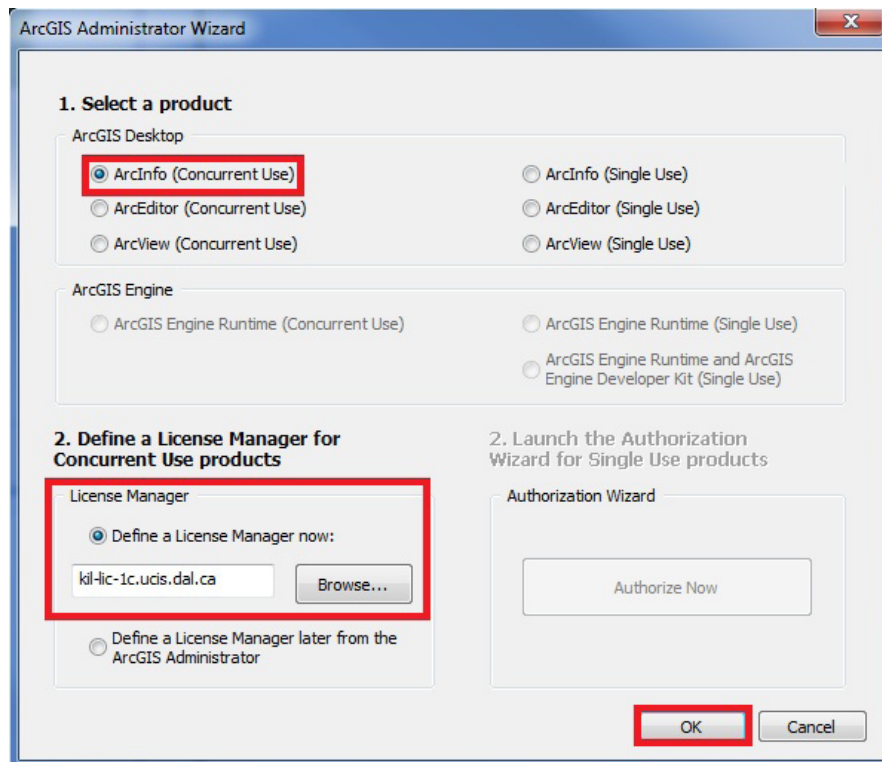


2.6 Leave the Python destination folder as the default and click Next

2.7 Click Next again and ArcGIS will begin to install

2.8 Once ArcGIS has been successfully installed click Finished

2.9 Select “ArcInfo (concurrent Use)”



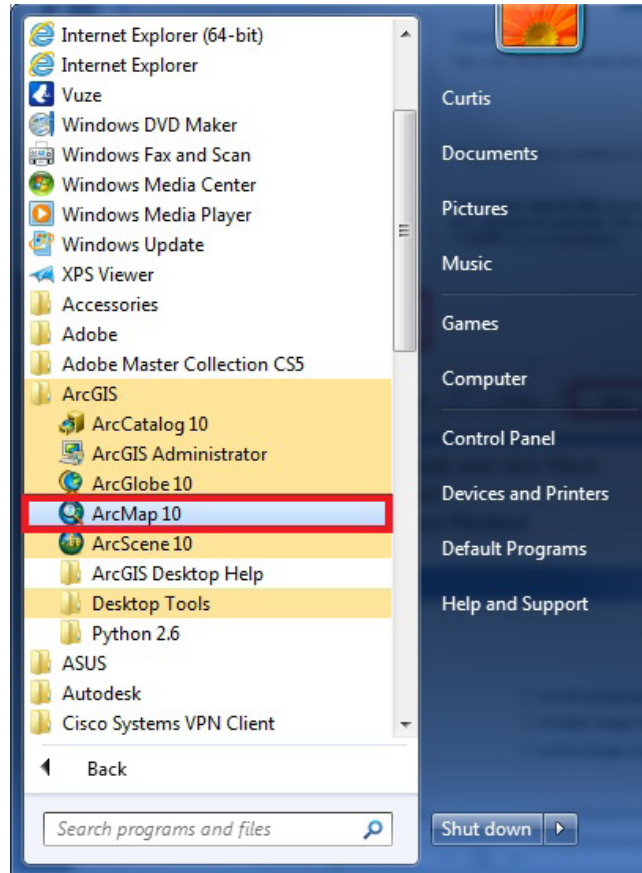
INSTALLING ARCGIS 10 FOR WINDOWS

2.10 Click “Define a License Manager now” and in the text field type “kil-lic-1c.ucis.dal.ca”

2.11 Click OK

2.12 Click OK again on the ArcGIS administrator window

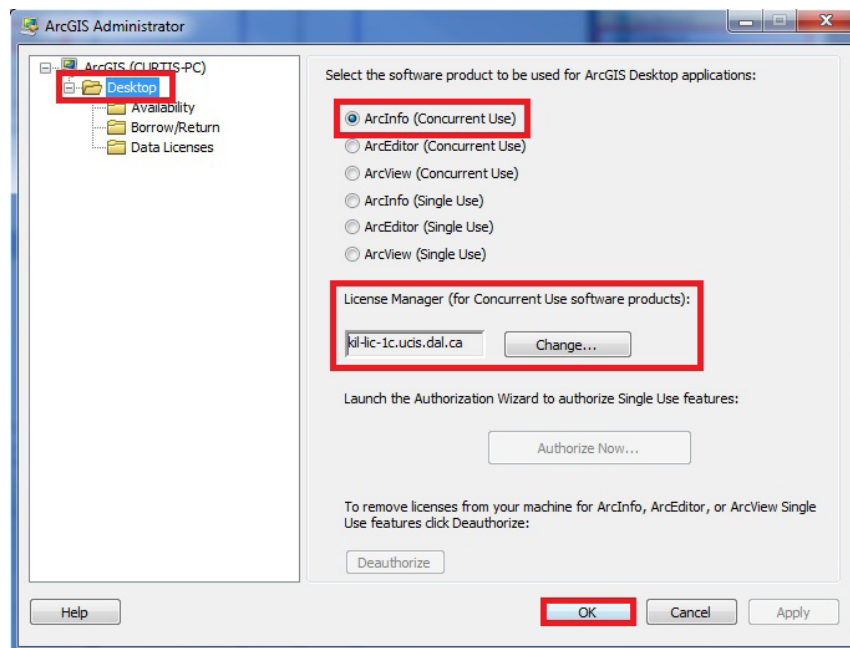
2.13 Click Start and navigate to the ArcGIS folder



2.13 Open ArcMap 10

2.13 If you are given an error open ArcGIS Administrator

2.14 Click Desktop and ensure that your settings match those in steps 2.9 - 2.10



INSTALLING ARCGIS 10 FOR WINDOWS

2.15 Once ArcGIS is working correctly close the program and double click “ArcGISDesktop10sp1.exe” on the Desktop

2.15 Click Next (ArcGIS service Pack will automatically locate the destination folder and install)

2.15 Click Finished

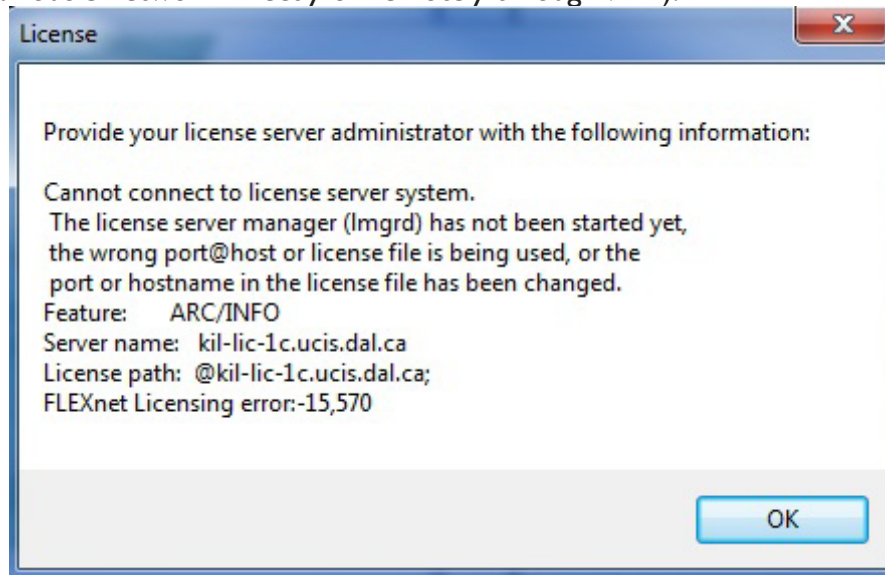
2.15 Click Ok

2.16 Delete “ArcGISDesktop10sp1.exe” and “ArcGIS10_Desktop.exe” from your Desktop

2.17 Enjoy

3.0 Troubleshooting

3.1 If you receive a license error please ensure you are connected to VPN (ArcGIS will not run unless you are connected to the Dalhousie network directly or remotely through VPN).



4.0 GIS Centre

For additional troubleshooting please contact Dalmaps@dal.ca or stop by the Dalhousie GIS Centre in the Killam Library.

For GIS help please try our website or visit us in person:

http://libraries.dal.ca/locations_services/services/gis_centre.html